

INTRODUCING

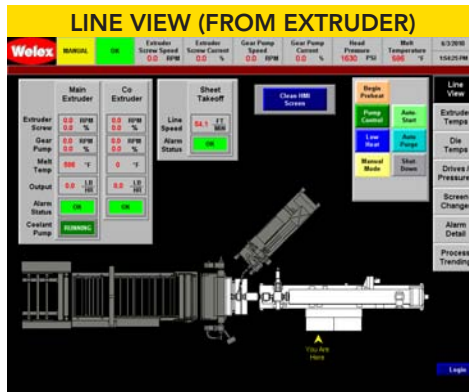
Welex Sentinel®

Robust and straightforward extrusion control at your fingertips

The Welex Sentinel® has arrived. Extrusion control has never been easier, better, or more precisely custom-configurable to satisfy your production demands, whatever they may be. Today, or in the future.

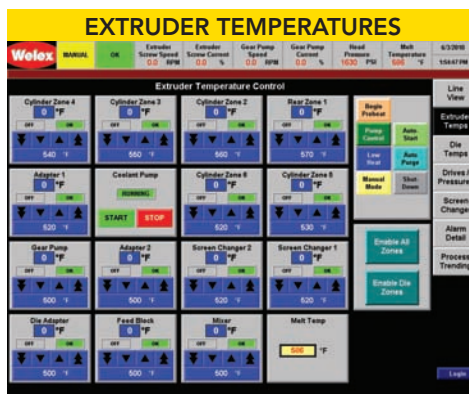
Built on the well-proven Allen-Bradley CompactLogix platform with a large 15" PanelView Plus touch screen HMI, this is the most robust, modular, and scalable control system Welex has ever offered.

The Welex Sentinel® utilizes the Ethernet/IP fieldbus protocol for real-time control and information. It is fully scalable, modular, and easy to configure—ensuring that as your process or equipment changes, your Welex extrusion equipment keeps right up with you. All line components can also be monitored remotely via the EtherNet/IP network, reducing maintenance costs while providing improved diagnostics benefits.

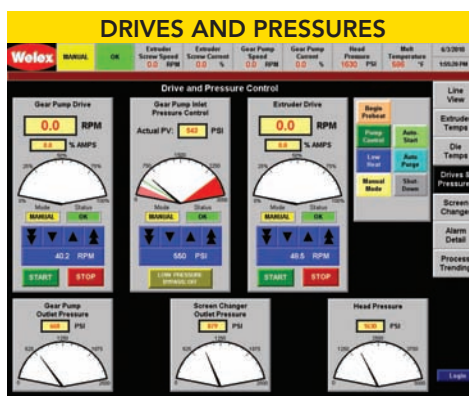


Easy to read format allows operator to quickly confirm running conditions of the extruder and any associated components (such as screen changer, gear pump, or die), including machine and line speeds, loads, pressures, and melt temperature. Complete system overview in a glance (Components controlled by currently viewed Welex Sentinel® station appear white – items controlled elsewhere appear gray)

Status overview, including mode indication is visible at the top of on all Welex Sentinel® screens.



Temperatures for the extruder and its associated components, including actual temperatures, setpoints and alarm status are clearly depicted in a single informative view. Alarms are tiered and color coded for clear recognition by Operator. Easily make and review setpoint adjustments via touch screen interface.

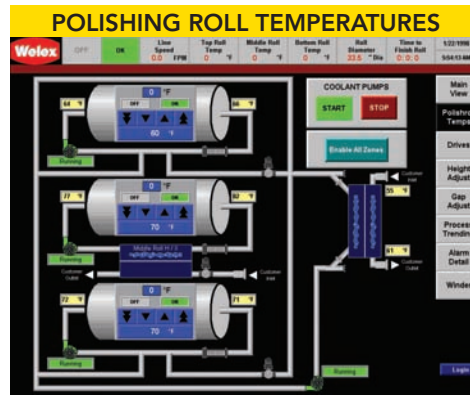


One screen provides straightforward graphical display and fully functional touch screen control of extruder and associated component drives. Details include speeds, amps, alarm status, pressure information, and control mode.

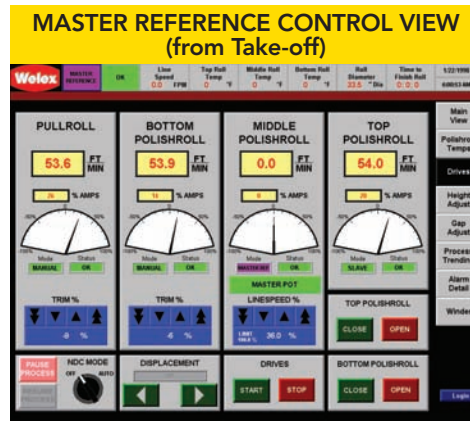


The Welex Sentinel® provides you with the insight and capability to:

- Control individual components of your Welex line reliably with ease
- Monitor key process details in a glance from any screen
- Utilize nine discrete run modes to easily start, run and shut-down your line
- Trend Process data (8 selectable points per Welex Sentinel® station)
- Enhance usability with multi-lingual displays
- Establish multi-level security access as required to meet your needs
- Simplify training and operation with clear HMI interface graphics
- Minimize spare parts inventory and greatly reduce maintenance
- Ensure system flexibility and expandability to meet internal and market demands
- Configure inter-operability with upstream and downstream components (by Welex)



Graphical depiction of roll stack highlights all inlet and outlet temperatures. Schematically displays status of all valves, pumps, heaters and heat exchangers.



With Master Reference active on the Welex Sentinel®, the Operator controls the sheet extrusion line's production rate by simply adjusting the master potentiometer at the nip. Master reference proportionally adjusts all extruder output in unison to adjust line speed while maintaining product structure.



Detailed display of active alarm status, plus alarm history for all associated components in a single view. Clear descriptions provided for each event. Tiered alarms are color coded (warning, fault, or fatal), and can be selectively viewed by type.

Welex extrusion systems are backed by a worldwide sales and service organization that you can count on for support at any time. For more information, contact: welex@welex.com, or visit www.welex.com to find your local sales representative.



Headquarters: Welex Incorporated • 1600 Union Meeting Rd. • Blue Bell, PA 19422 USA • Tel: 215-542-8000
Manufacturing: Welex Incorporated • 200 Industrial Blvd. • Greenville, NC 27834 USA • Tel: 252-317-2700